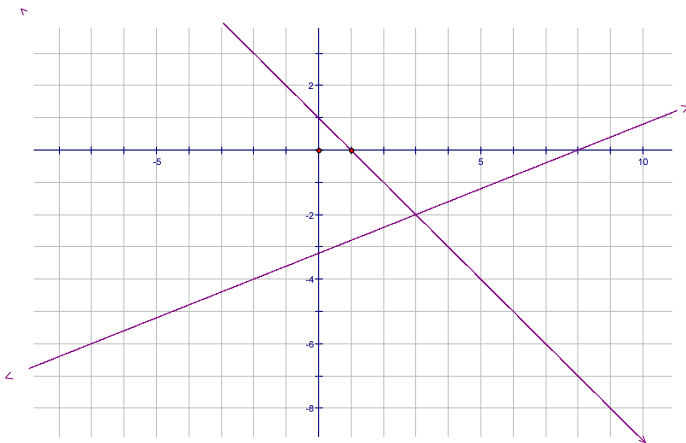


Systems of Equations  
Algebra 2

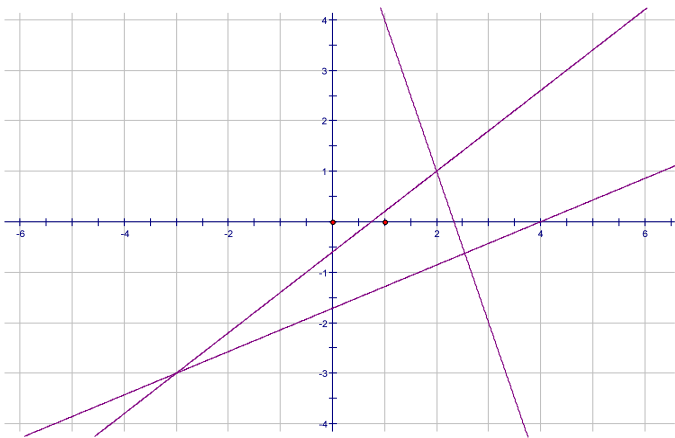
1) What is the graph of an equation?

2) What is a solution of a system of equations?

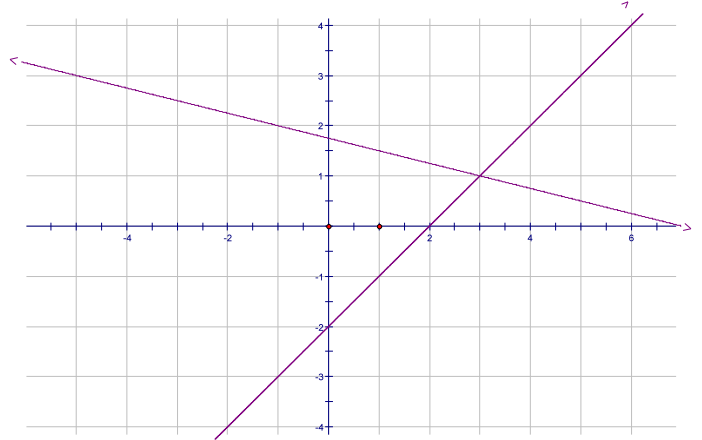
3) Find the solution to the system of equations graphed below. Explain your answer.



4) Find the solution to the system of equations graphed below. Explain your answer.



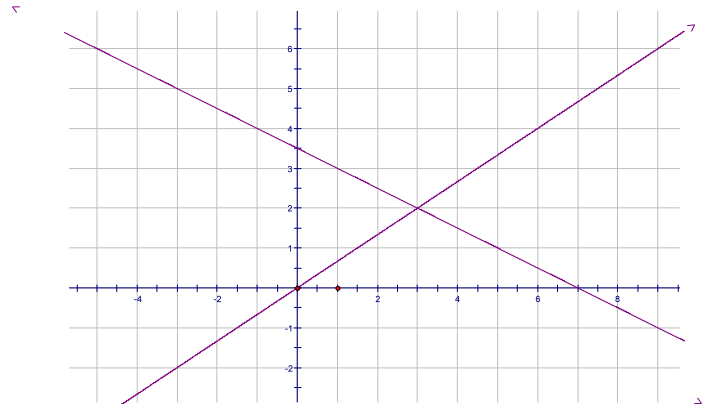
5) Find the solution to the system of equations graphed below. Check your answer.



Equ. 1:  $x + 4y = 7$

Equ. 2:  $x - y = 2$

6) Find the solutions to the system of equations graphed below. Check your answer.



Solve the following systems of equations by substitution.

$$\begin{aligned} 7) \quad c + 4d &= 7 \\ 3c - 2d &= -21 \end{aligned}$$

$$\begin{aligned} 8) \quad y &= 2x + 4 \\ -10x + 5y &= 20 \end{aligned}$$

$$\begin{aligned} 9) \quad u - 9v &= -3 \\ -2u + 5v &= -7 \end{aligned}$$

$$\begin{aligned} 10) \quad 4f + 3g &= -5 \\ 3f + 5g &= 21 \end{aligned}$$

Solve the following systems of equations by elimination.

$$\begin{aligned} 11) \quad 3m + 4n &= -6 \\ m - 3n &= 11 \end{aligned}$$

$$\begin{aligned} 12) \quad -3x + y &= 5 \\ 6x - 2y &= 2 \end{aligned}$$

$$\begin{aligned} 13) \quad 2j + 5k &= 2 \\ -3j - 7k &= -5 \end{aligned}$$

$$\begin{aligned} 14) \quad 2p - 5q &= 9 \\ p - 8q &= -1 \end{aligned}$$