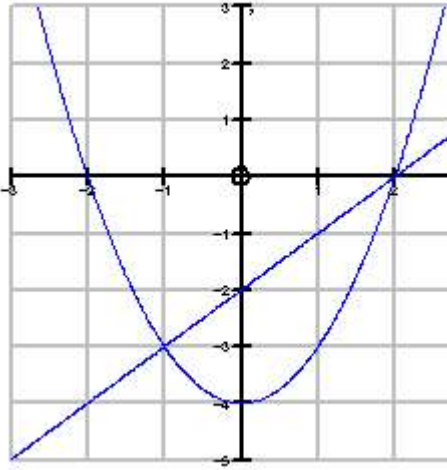


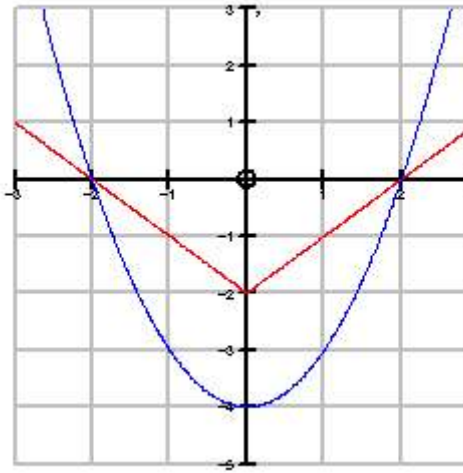
Systems of Equations 2.1
Algebra 2

Give the solutions for each system of equations.

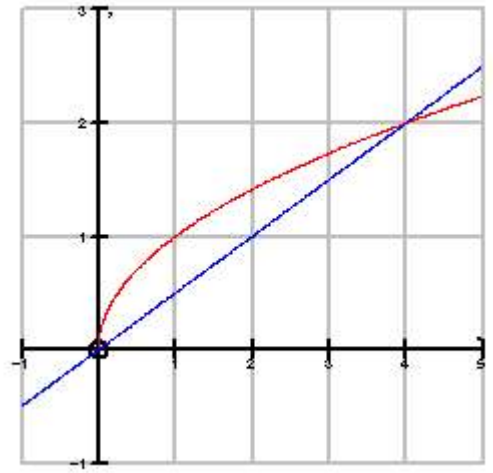
1)



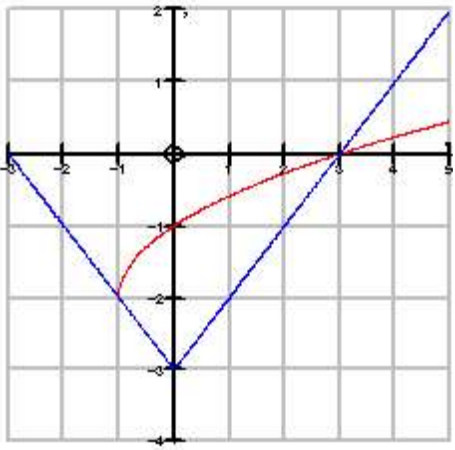
2)



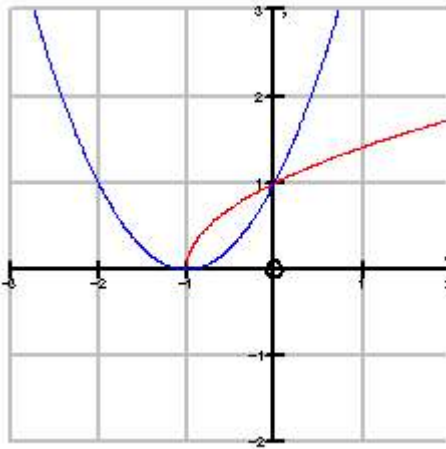
3)



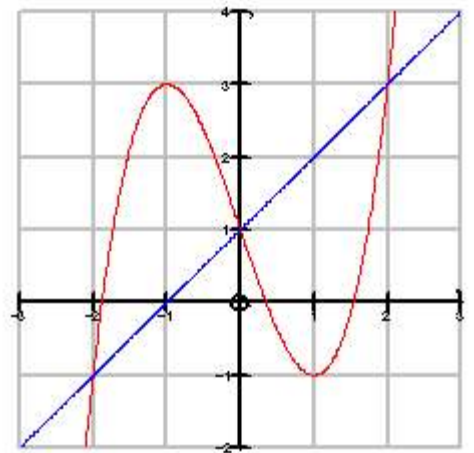
4)



5)



6)



Solve the system of equations using the indicated technique.

7) Use substitution.

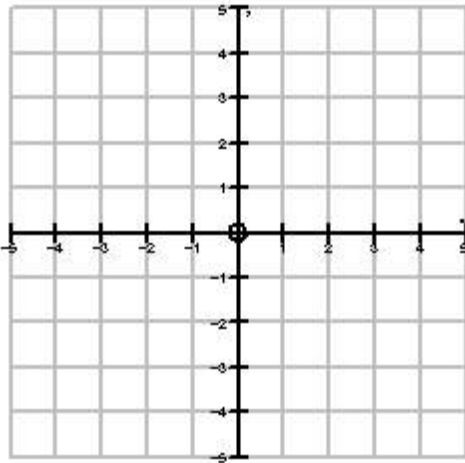
$$\begin{aligned} -2x + 3y &= -3 \\ x + 3y &= 6 \end{aligned}$$

8) Use elimination.

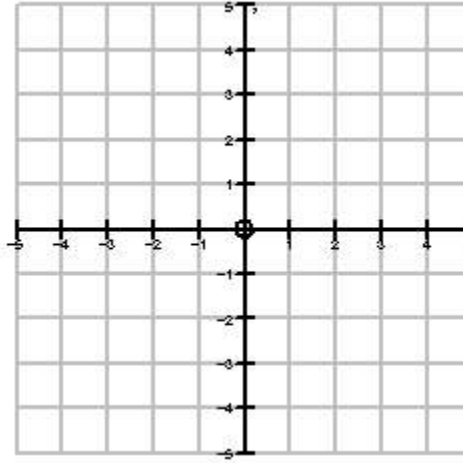
$$\begin{aligned} -3x + y &= -2 \\ -2x + 3y &= 1 \end{aligned}$$

Graph the inequalities or system of inequalities.

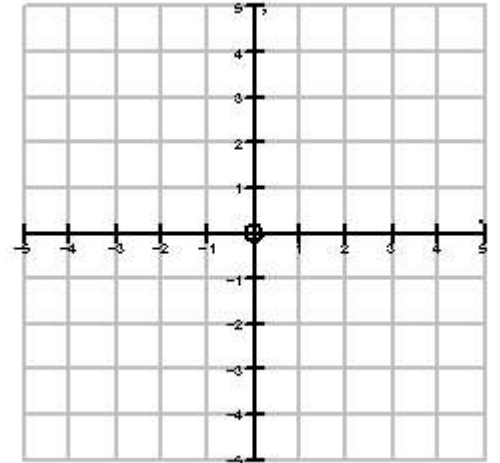
9) $y < x$



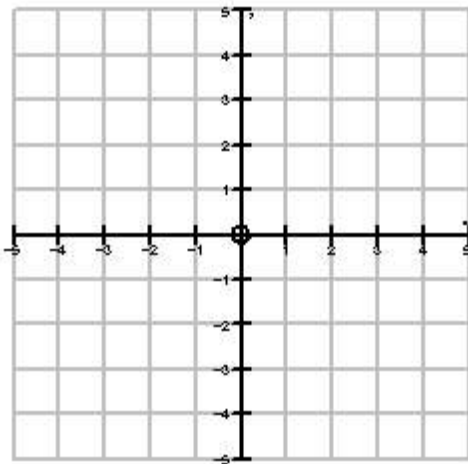
10) $y \leq x^2$



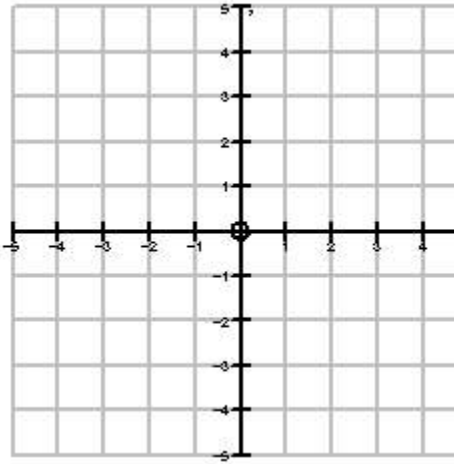
11) $y > |x|$



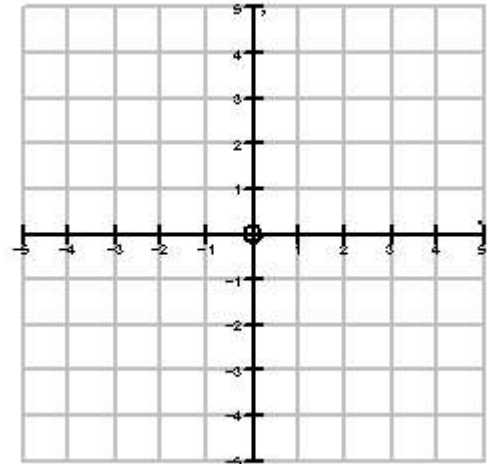
12) $y \geq -x + 1$



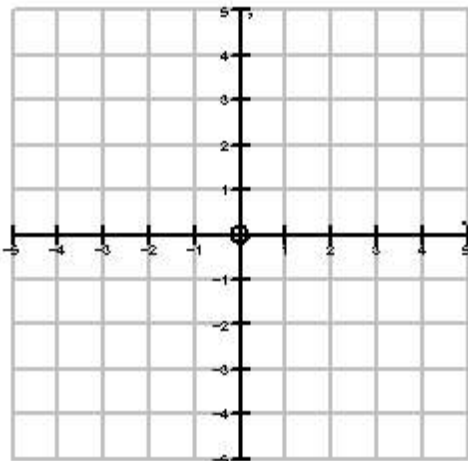
13) $y < 2x + 4,$
 $y < -x + 2$



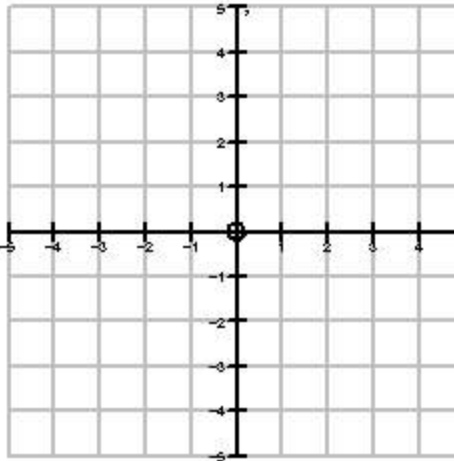
14) $y > -(1/2)x - 1,$
 $y \leq (2/3)x + 2$



15) $y \geq x^2 - 3,$ $y < (1/2)x + 1$



16) $y \leq -|x + 2| + 2,$
 $y > -\sqrt{x + 4}$



17) $y > x^2,$ $y \leq 2x + 3,$
 $y < -x$

